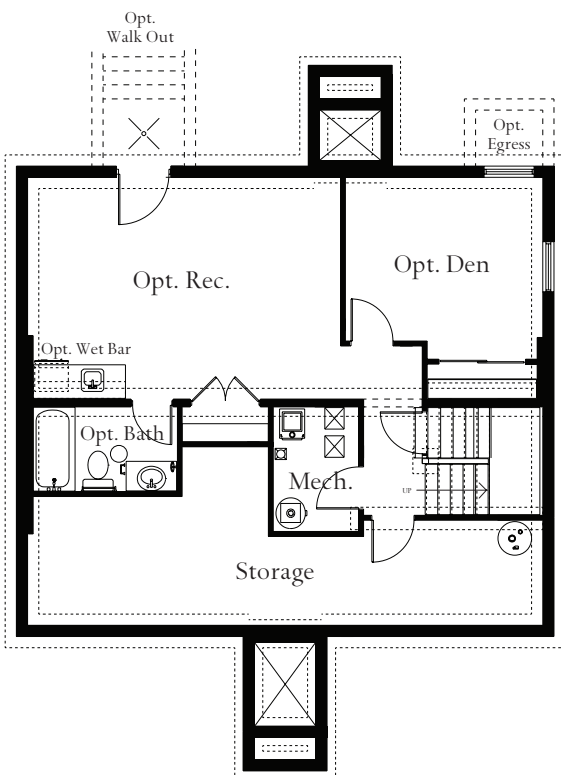
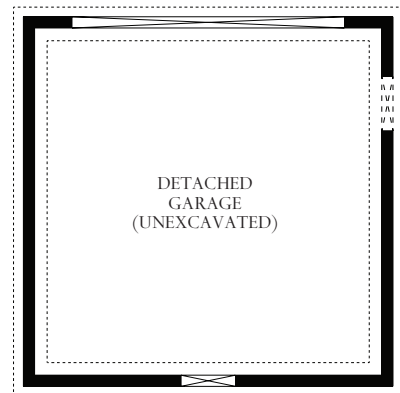
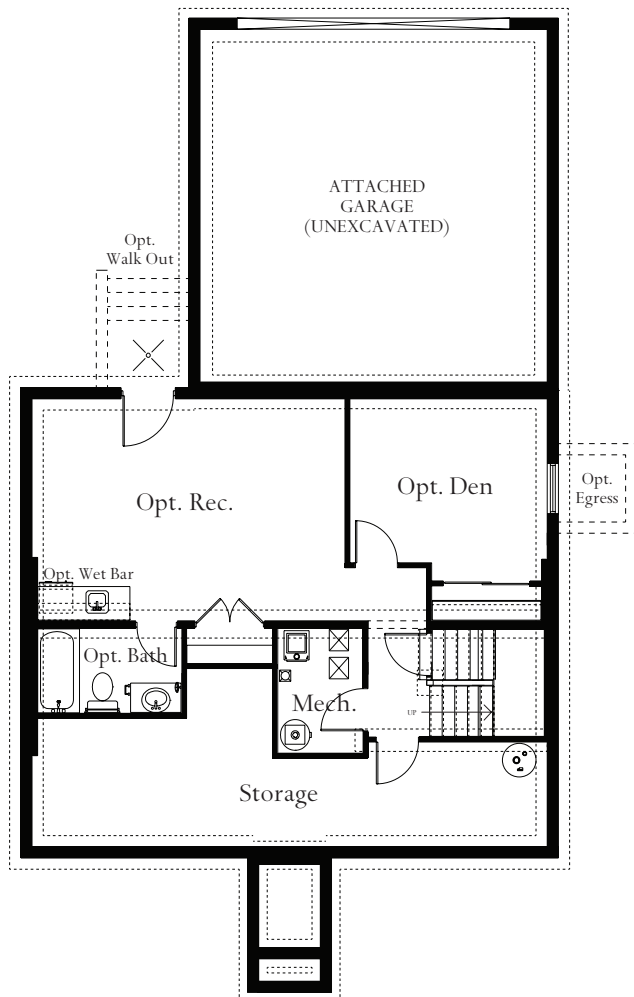


# The Jackson

## LOWER LEVEL



Opt. Finished Foundation Plan with Detached Garage



Opt. Finished Foundation Plan with Attached Garage



{Atlantic Seaboard}



{Federal}



{Craftsman}

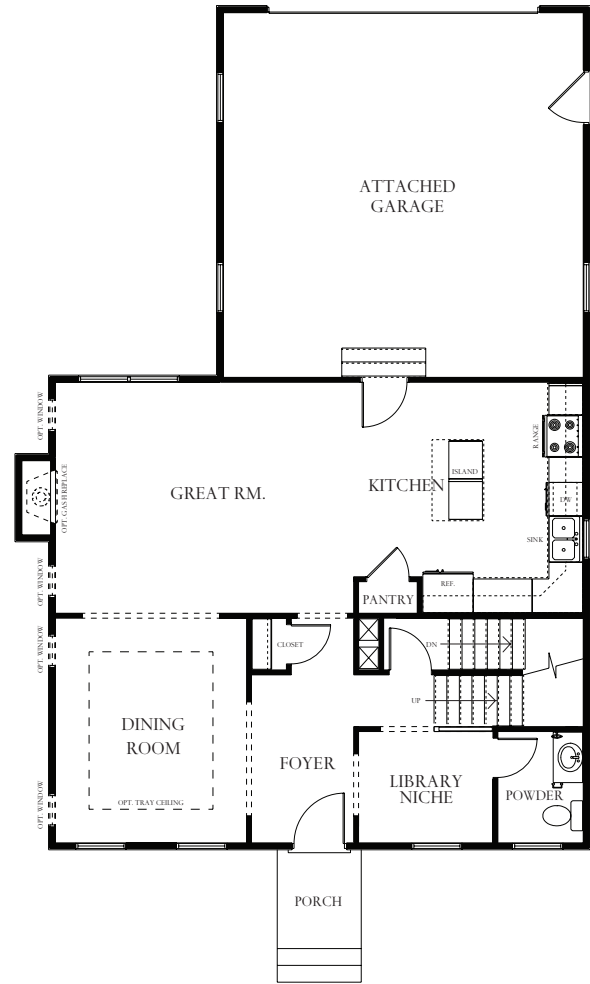
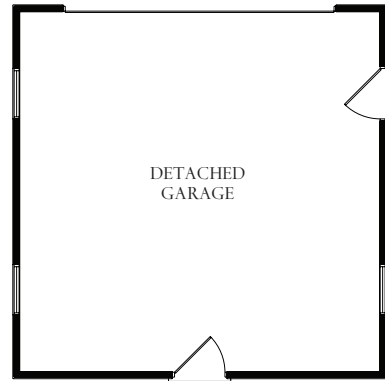
The Jackson is as practical as it is luxurious, with spacious openness in all the rooms that matter to your lifestyle. With a large Dining Room, open to the Great Room, entertaining is easy in The Jackson. A large kitchen, complete with pantry and an oversized island, is the perfect gathering spot for the whole family. Just off of the foyer is the Library, a perfect space for a small desk to organize the family calendar. Upstairs, the Master Suite includes a large bedroom and bath, complete with double vanities, oversized shower with seat, linen closet and walk in closet. Two additional bedrooms are on the upper level, along with a hall bath and generously sized laundry room. The lower level can be finished to include a Rec Room, Den, Full Bath and Wet Bar. A Two-Car Garage is available as an option. The Jackson starts at just under 1700 square feet.

**ATLANTIC BUILDERS**  
GIVING YOU MORE

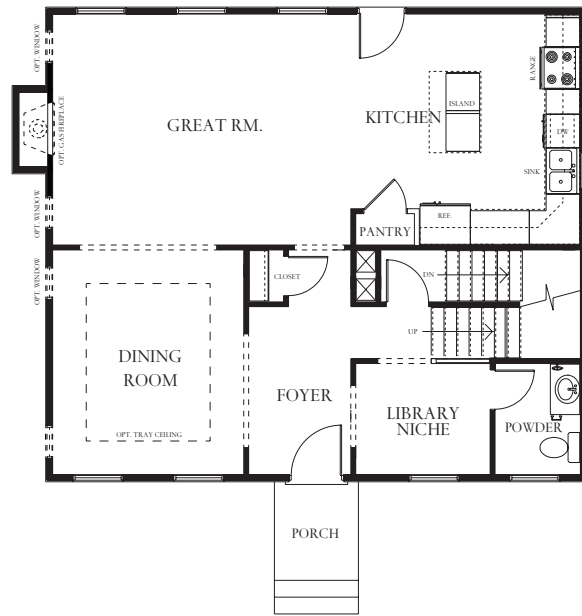


**ATLANTIC BUILDERS**  
GIVING YOU MORE

MAIN LEVEL

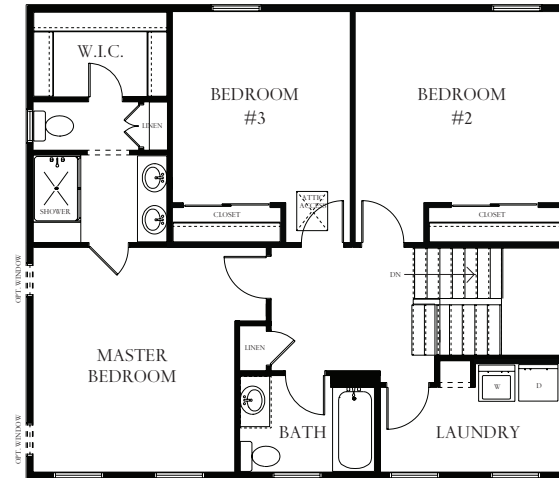


First Floor Plan with Detached Garage

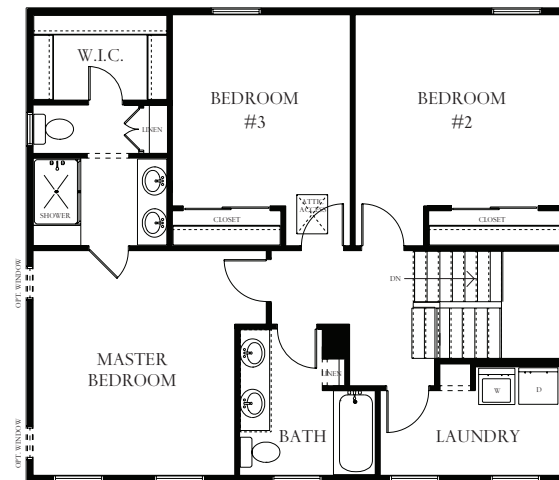


First Floor Plan with Attached Garage

UPPER LEVEL



Standard Second Floor Plan



Alternate Second Floor Plan with Opt. Double Vanity in Hall Bath